



# Cash Organizer 2004 Deluxe User Manual

## **Inesoft Cash Organizer**

Copyright © 1998 – 2004 Kim Tkhe Sik, Lukyanov Maxim  
All rights reserved.

Cash Organizer is a trademark of Inesoft. ActiveSync is a registered trademark; Microsoft is a registered trademark of Microsoft Corporation. All other trademarks are the property of their respective companies. The information in this document is subject to change without notice. No part of this document may be reproduced or transmitted in any form or by any means, electronic or mechanical, for any purpose, without the express written permission of Inesoft.

---

**Table of Contents**

<b>1</b>	<b>Installation</b> .....	<b>4</b>
<b>2</b>	<b>Registration</b> .....	<b>4</b>
<b>3</b>	<b>Getting Started</b> .....	<b>4</b>
3.1	Running the program for the first time .....	5
3.2	Program modes .....	5
3.3	Help system .....	6
3.4	Menus and pop-up windows .....	6
<b>4</b>	<b>Account Center</b> .....	<b>7</b>
4.1	Single account mode .....	8
4.2	Entering a new transaction .....	8
4.3	Transaction attributes .....	8
4.3.1	Description .....	9
4.3.2	Date .....	9
4.3.3	Amount .....	9
4.3.4	Category .....	9
4.3.5	Project .....	10
4.3.6	Contact .....	10
4.3.7	Number .....	10
4.3.8	Mark .....	10
4.3.9	Note .....	10
4.4	Forecasting balance changes .....	11
4.5	Account balance reconciliation .....	11
4.6	Delete old transactions .....	12
4.7	Account group configuration .....	12
<b>5</b>	<b>Project Center</b> .....	<b>13</b>
5.1	Create, edit and delete projects .....	14
5.2	View current balance of the project .....	15
5.3	Prognosis of the project's balance changes on selected date .....	15
<b>6</b>	<b>Planning Center</b> .....	<b>15</b>
6.1	Create scheduled transaction .....	16
6.2	Create scheduled repeating transaction .....	16
6.3	Scheduled transaction groups .....	16
6.4	Template usage in the transaction's name .....	17
6.5	Scheduled transaction reminder .....	18
6.6	Prognosis of scheduled transactions .....	18
6.7	Inactive scheduled transactions .....	19
6.8	Partial performance of scheduled transaction .....	19
<b>7</b>	<b>Category Center</b> .....	<b>19</b>
7.1	Create and edit category .....	19
7.2	Delete category .....	20
<b>8</b>	<b>Budget Center</b> .....	<b>20</b>
8.1	General principles .....	21
8.2	Create new budget group .....	22
8.3	Add new category to the budget .....	22
8.4	Delete category from the budget .....	22
8.5	Rename budget or change assigned project .....	22
8.6	Delete the budget group .....	23
8.7	Set the category limits .....	23
8.8	Set a date range for budget planning .....	23
8.9	View the results .....	24
8.10	Exclude transactions from the budget .....	24
8.11	Budget transactions report .....	24
8.12	Notification of a budget limit exceeding .....	24
<b>9</b>	<b>Report Center</b> .....	<b>24</b>
9.1	Reporting .....	25

---


---

9.2	Adjusting filter.....	25
9.3	Selecting the report's form .....	27
9.4	Process the report made .....	28
9.4.1	Presentation form for the report selection .....	28
9.4.2	Changing filtration parameters.....	29
9.4.3	View small-sized elements .....	29
9.4.4	Open a legend completely or partially.....	30
9.4.5	Getting detailed information on the report's elements .....	30
9.4.6	Create an auxiliary report .....	30
9.5	Save report to file.....	31
9.6	Transfer data into other programs .....	31
9.7	My Reports mode .....	31
9.8	Printing.....	32
<b>10</b>	<b>Program Settings.....</b>	<b>32</b>
10.1	Currencies .....	33
10.2	Screen view .....	33
10.3	Password .....	34
<b>11</b>	<b>Today Plug-in.....</b>	<b>34</b>
<b>12</b>	<b>Working with Data.....</b>	<b>35</b>
12.1	Create and renew archive data file .....	36
12.2	Restoring existing archive data file .....	36
12.3	Clean up the database .....	36
12.4	Data exchange with other applications .....	37
12.4.1	Synchronization with Microsoft Money® .....	37
12.4.2	Data export.....	37
12.4.3	Data import.....	38

## 1 Installation

To install Cash Organizer on your Pocket PC, perform the following steps:

1. Install Microsoft ActiveSync on your desktop computer;
2. Connect your Pocket PC;

**Note.** To ensure that your PC and Pocket PC are connected properly, look at the Task Bar. The ActiveSync icon must be green .

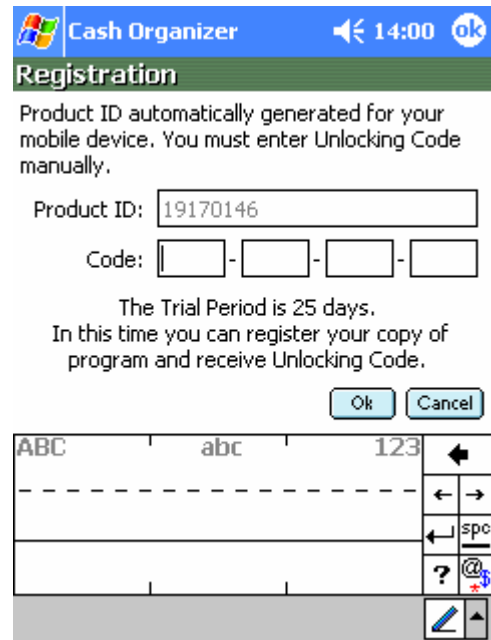
3. Run the installation program;
4. Click **Install** in the opened window "Install Inesoft Cash Organizer";
5. While the installation is running, several dialog boxes will appear on the screen. Click **OK** each time to continue the installation process.

## 2 Registration

Cash Organizer is protected from illegal distribution. A trial copy has no limitations in functionality for 25 days. After that period, Cash Organizer will stop working if not registered. Please visit [www.inesoft.com/registration](http://www.inesoft.com/registration) to register your copy.

Each copy of Cash Organizer has its own identification number (**Product ID**). This number is indicated in the corresponding line of the registration window. To register your copy and remove the time limitation, open **Tools/Register Cash Organizer** menu, enter the **Unlocking Code** delivered by Inesoft Company in the appropriate fields and click the **OK** button.

**Note.** If you have lost your Unlocking Code or your handheld device generated a new Product ID after re-installation (concerns devices running Pocket PC 2000 OS only), send a request for a new Unlocking Code to Inesoft Support Center at [support@inesoft.com](mailto:support@inesoft.com). This service is free of charge.



Cash Organizer 14:00

### Registration

Product ID automatically generated for your mobile device. You must enter Unlocking Code manually.

Product ID: 19170146

Code: - - - -

The Trial Period is 25 days.  
In this time you can register your copy of program and receive Unlocking Code.

Ok Cancel

ABC abc 123 ←

← →

← spc

? @ \*

⌨

## 3 Getting Started

This chapter contains information which will help you learn the first steps of using Cash Organizer. You will learn:

- [How to run the program and create your first account;](#)
- [The different program modes;](#)
- [How to use the Help system of the program.](#)

### 3.1 Running the program for the first time

To run the program, go to **Start -> Programs** and tap on the Cash Organizer's icon .

When running the program for the first time, it will prompt you to create your first account or restore your financial data from a Cash Organizer backup file. Press **Create** button to create your first account.

Type the account name in the **Description** field – the program will use this name for account processing;

Select a currency name from the **Currency** drop-down list which will be used as the primary one for this account;

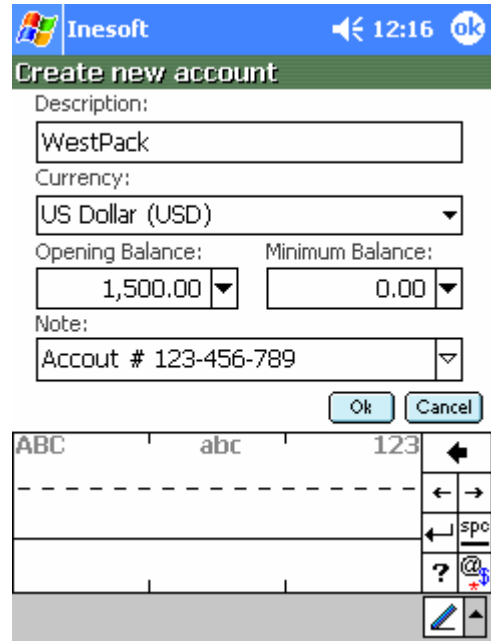
Enter an initial account balance (optional) in the **Opening Balance** field. This value will be added to the total account balance;

Enter a **Minimum Balance** if notification is needed when the current account's balance drops below this value;

In the **Note** field, you can enter an account description (for example, a bank account number, credit card number, etc.);

When the account description is finished, click **OK** button.

The program is ready for use.



### 3.2 Program modes

Cash Organizer has six modes corresponding to the different functions performed:



**Account Center** allows adding, editing and deleting accounts, as well as entering new transactions, importing and exporting QIF files and reconciling accounts' statements. Notification of scheduled transactions, when they come due, will occur in this mode as well.



**Project Center** controls receipts and expenditures for each project. You can see all related transactions and balances;



**Planner Center** allows registering scheduled transactions (single and repeating) and forecasting;



**Category Center** allows you to add, edit and delete categories;




**Budget Center** lets you plan your budget based on categories and projects as well as forecasting spending;





**Report Center** lets you display financial information in graphical and text mode, export it to a file or make a printout without needing to use a desktop computer.

To switch between modes, tap on the appropriate icon.

**Note.**  button returns you to the previous view.

### 3.3 Help system

A help system is included with the program to help you solve problems. To run the system, open the **Tools/Help** menu. Select the required topic by tapping on it. The content of the topic will be displayed. Some words (marked with blue font) contain links to other topics. After clicking such a word, information on the meaning of this word will be shown. The following buttons are in the lower part of the screen:

-  Back to the previous topic;
-  Forward to the topic you came from.

### 3.4 Menus and pop-up windows

Tools menu:

<p><b>Register Cash Organizer</b></p> <p><b>Register MoneySync</b></p> <hr/> <p><b>Find...</b></p> <p>Find Next</p> <hr/> <p><b>File</b> ▶</p> <p><b>Options...</b></p> <hr/> <p><b>Help</b></p> <hr/> <p><b>Exit</b></p>	<ul style="list-style-type: none"> <li>- Opens Cash Organizer registration window*;</li> <li>- Opens <a href="#">MoneySync</a> registration window**;</li> </ul> <hr/> <ul style="list-style-type: none"> <li>- Opens search dialog;</li> <li>- Starts searching for next item;</li> </ul>
<p><b>Tools</b></p>	<ul style="list-style-type: none"> <li>- Opens Cash Organizer options window;</li> <li>- Opens Cash Organizer help system;</li> <li>- Closes the program</li> </ul>
<p>Opens About window -</p> <p>Data backup tool -</p> <p>Data restore tool -</p> <p>Deletes all financial data -</p>	<p><b>About...</b></p> <hr/> <p><b>BackUp...</b></p> <p><b>Restore...</b></p> <hr/> <p><b>Database clean up...</b></p>

Cash Organizer has an advanced built-in information system. Use the tap&hold technique to open a pop-up window for additional information on selected item or to see available actions.

\* - available if your copy of Cash Organizer is unregistered;  
 \*\* - available if MoneySync module is installed and is unregistered.

## 4 Account Center

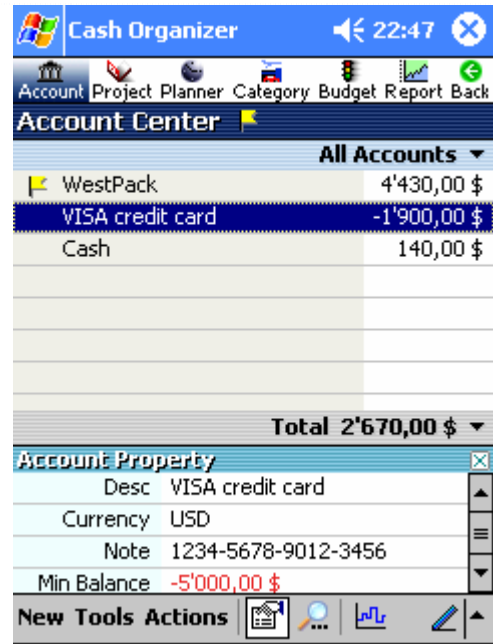
This is the home window that contains a list of all accounts, allows switching between them and notifies you of scheduled transactions that are due.

Accounts are intended for keeping track of the money you possess or expect to spend. Each account can contain some initial funds and list of the related transactions. An example of such a list is a bank account statement for a certain period.

Various types of account can be created. You can open accounts showing:

- Various forms of monetary assets (cash, bank account, credit card, etc.);
- Names of your employees to whom you are supposed to transfer salaries;
- Names of the companies you deal with, etc.

To open an account in the list, tap on its name twice or use hardware **Enter** button.



Menus and buttons available in this mode:

<b>New Account...</b>	- Creates new account;
<b>Edit Account...</b>	- Edits selected account;
<b>Delete Account...</b>	- Deletes selected account;
<b>Reconcile...</b>	
<b>Reconcile...</b>	- Opens reconciliation tool window;
<b>Import QIF...</b>	
<b>Import QIF...</b>	- Imports data from a QIF file;
<b>Export...</b>	
<b>Export...</b>	- Opens data export window;
<b>Config Account Group...</b>	
<b>Config Account Group...</b>	- Opens account group configuration window;
<b>Delete Old transactions...</b>	
<b>Delete Old transactions...</b>	- Opens tool for deleting old transactions.
<b>Actions</b>	



Show/hide Account Property window;



Find/Find Next transaction;



Account balance report;



Notification flag – informs you about due scheduled transactions and exceeded minimum balance. Tap on it to see detailed info.

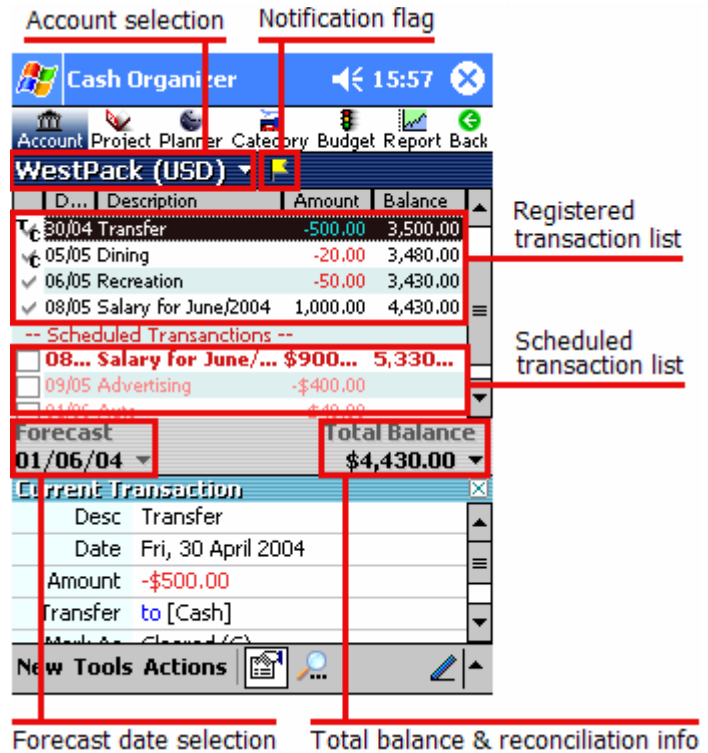
### 4.1 Single account mode

The account balance is determined by the total of all receipts and expenditures plus any initial funds.

A transaction is a basic financial operation of money receipt or expenditure as well as money transfers from one account to another.

There are three types of transactions:

- Simple transaction;
- Compound transaction (split);
- Transfer.

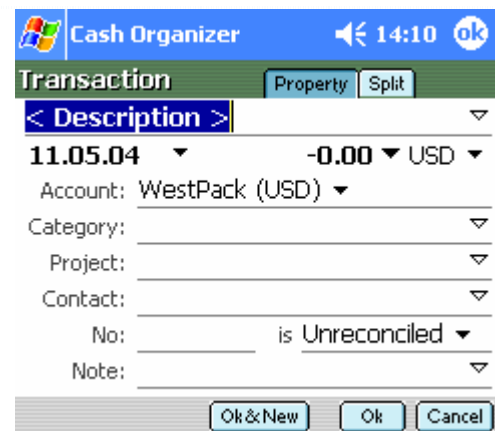


### 4.2 Entering a new transaction

To initiate a new transaction, select **New** in Account Center or single account mode. An appropriate window will be opened.

As soon as you start typing in the **Description** field, Cash Organizer will guess what you will type based upon previously entered items in all accounts. It also remembers the last entered amount, category and project assignment.

Cash Organizer also allows making compound transactions (splits). A split is a transaction where you break up a transaction into parts. For example, if you are recording your paycheck, but this month you also got a bonus, you can make that a single transaction with two parts.



### 4.3 Transaction attributes

Each transaction contains certain attributes that allow you to classifying your receipts and expenditures by various characteristics.

### 4.3.1 Description

A transaction's description is the attribute displayed in the transaction list. You should use a description that can be easily recognized in the transaction list. For example, you can use "Hotel" to describe a transaction for a hotel room payment.

It is desirable that the description not be too long, as the entire length of long descriptions can't be seen on the screen due to insufficient width of the column. A description that is not shown in its entirety ends with dots. For example, in the transaction list, instead of "Salary for January 2004", you will see "Salary for Jan...".

### 4.3.2 Date

Transaction date shows the actual date the transaction was recorded. This information is very useful, as it allows tracing the balance changes over the course of time. To set the date of the transaction, select ▼ next to the date field (by default, the field will be filled with the current date). The calendar for the current month will appear on the screen. If you want to change the month, press the arrow next to the month's name. Select the required month and date in the calendar.

### 4.3.3 Amount

Amount is one of the key attributes of the transaction. It shows the amount of the receipt or expenditure. Amount is shown in the transaction attributes window next to the date.

If the transaction amount is known, move to the transaction amount field and enter the amount. A positive value indicates a receipt and a negative value indicates an expenditure.

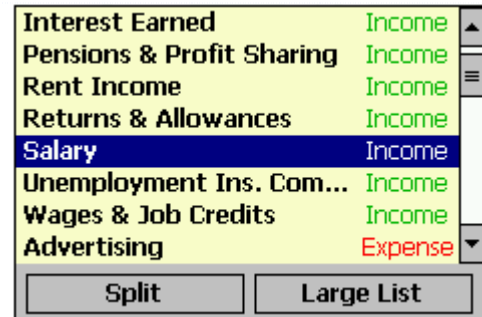
If the amount needs to be calculated first, you can use the built-in calculator. For this purpose, press the ▼ next to the amount and calculate the transaction amount. After pressing "=", you will see the result in the amount field.



To select the transaction currency, press ▼ in the currency field next to the transaction amount. Then select the required currency's symbol from the list. The program will confirm an exchange rate and save it in the currency history table.

### 4.3.4 Category

Category allows you to classify your transactions. Press ▼ next to the **Category** field. A list of categories will be opened on the screen. Each category is marked as receipt or expenditure. At the end of the list, you will find the names of all your accounts, select the required one if you wish to create a transfer. At any time, you can change the list by creating new categories, editing the existing ones and deleting useless ones. For this purpose, select the [Categories](#) tab.



### 4.3.5 Project

Project allows you to classify groups of transactions spent on some purpose. Press ▾ next to the **Project** field and select the required project from the list. A window similar to the category window will be opened.

### 4.3.6 Contact

You may need to get details on any of the transactions some time after it has been performed (for example, to specify the cost of promotion materials). For such a purpose, you can set the **Contact** attribute. To set it, you can either enter contact information into the **Contact** field or press ▾ next to this field and select contact information from the Outlook contact list.

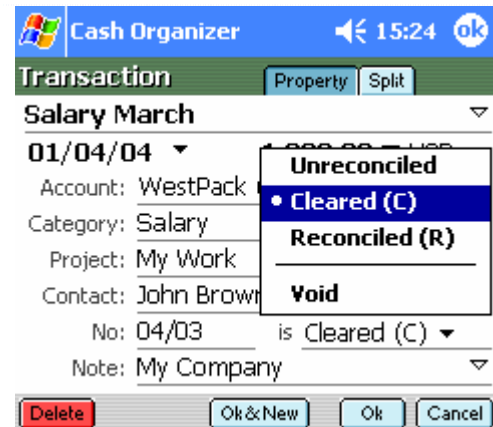
### 4.3.7 Number

You can assign a number attribute to the transaction. This can help you when viewing the transaction list as transactions can be arranged according to their number (for example, the check number, the time the transaction was entered or its importance). To assign a number to the transaction, move to the **No** field and enter the required number. Cash Organizer's autofill function generates a new number when you enter a similar transaction.

### 4.3.8 Mark

Marks are used when reconciling the balance of your electronic account with that of your real bank account using the account statement. To select a mark, press ▾ next to the mark field. There are three types of marks:

- ✓ **Unreconciled** – transactions that are not included in the bank account balance or haven't been reconciled to the bank account;
- ✕ **Cleared** – transactions that have cleared through the account but have not yet been reconciled on an account statement;
- ✕ **Reconciled** – group of transactions with a total balance equal to that of the account statement.



By default, all new transactions are marked as **Unreconciled**.

You can use **Void** instead of any of the marks. Transaction marked in this way will not affect the account balance.


■ **Note.** The transaction's mark can be changed by tapping on its symbol in the transaction list view.

### 4.3.9 Note

You can use the Note field to enter additional information about the transaction. You can enter your bank account number or more detailed information on the transaction's purpose, etc.

■ **Note.** To initiate a new transaction in Today screen, tap on **New** button and select **Cash Organizer**.

### 4.4 Forecasting balance changes

To evaluate balance changes, set the prognosis date in the **Forecast** field and if you have scheduled transactions assigned to that account, the notification flag  will appear next to the account name. Tap on the flag to open a table containing the prognosis of the account balance changes.

- **Account** - active account;
- **Scheduled** - selected prognosis date;
- **Amount** - sum of all scheduled transactions by the selected date;
- **Balance** - expected balance of the account taking into consideration all current and scheduled transactions to be performed by the selected date;
- **By Categories, By Projects, By Contacts** - distribution of scheduled transactions between projects, categories and contacts respectively.

<b>Account: WestPack (USD)</b>
<b>Scheduled 04/06/04</b>
<b>Amount: \$900.00</b> <b>Balance: \$5,330.00</b>
<b>By Categories</b> Salary: \$900.00
<b>By Projects</b> My Work:Contract #2: \$900.00
<b>By Contacts</b> John Brown: \$900.00

### 4.5 Account balance reconciliation

It is recommended that you periodically compare (once a month) the balance of your electronic account with your real bank account. To do this, you need your bank account statement. To start the reconciling process of your account balance, select the required account and open **Actions/Reconcile Account** menu.

First, you should set the key parameters of the reconciliation: date, starting and ending balances and, if required, service charge and interest earned in the appropriate fields. Use the data from your bank account statement. After you have finished, press **OK**.

Once you have set the parameters for account reconciliation, the balance reconciliation window will appear.



In the upper part of the window, you can see: the difference between the initial balances of the electronic and the real bank account (if the balances are equal, the line is absent), the cleared balance (starting balance and all the transactions marked as **Cleared**), the end balance, and the total difference. Then you will see information on the number of all receipt and expenditure transactions marked as **Cleared** and their total amount as well as lists of all the receipt and expenditure transactions for this account marked as **Unreconciled** or **Cleared**.

C	Date/No	Description / Amount
C	01/03/04	Salary March 1,500.00
	08/05/04	Salary for June/2004 1,000.00



When reconciling the balance, click the "C" field for all transactions coinciding with the bank statement and they will be marked as **Cleared**. Make any appropriate changes in the amounts of the reconciled balances, balance disparities, number and amounts of

receipt and expenditure operations.

On having reconciled the entire statement, you should get zero disparity between the balances. In this case, the balance reconciliation may be successfully finished by pressing **OK**.

All transactions marked during the balance reconciliation will be turned into **Reconciled**  ones, unmarked ones will remain as **Unreconciled** .

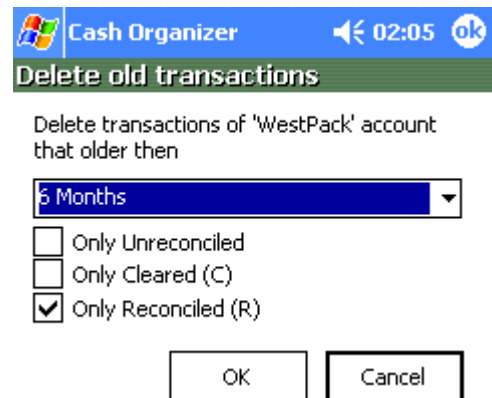
Sometimes, for various reasons, the balance of your electronic account does not coincide with the bank statement (for example, you forgot to enter one of the transactions). In this case, if you press **OK**, the program will notify you that your balance does not coincide with the bank statement and the program will offer two solutions: you can either continue reconciliation or finish the procedure by entering a new transaction for the amount equal to the difference between balances. If you agree to enter such a transaction, all of the ones marked during the process of reconciliation as well as the new transaction will be marked as **Reconciled**. During the next reconciliation, transactions marked as **Reconciled** will not be included in the transaction lists.

**Note.** In the event you cannot reconcile the account in one session, you can interrupt reconciliation by pressing . Any transactions which have been marked up to that moment, will be marked as "Cleared" . To continue the reconciliation, select the appropriate command from the menu; reconciled transactions will be marked in the list.

## 4.6 Delete old transactions

As time passes, the transaction list will gradually grow. At some point it may become too long as most of the old transactions are reconciled with bank account statements and will not be changed again. You can shorten the list of transactions by deleting old transactions from it. For this purpose, select **Actions/Delete Old Transactions** from the menu.

Select a period at which any transactions older than it should be deleted - you can choose between the offered periods. Mark the checkboxes of the transactions you want to delete and press **OK**. After deletion, one transaction, named **Balance after deleting** for the amount equal to the total balance of the



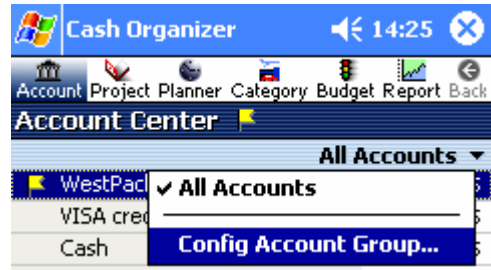
deleted transactions will be entered in place of the old transactions. As a result, you may have three transactions marked as **Unreconciled**, **Cleared** and **Reconciled** respectively.

**Note.** When deleting old transactions, you will lose any information on categories, projects, contacts and other attributes for each of the transactions. If this information is important to you, you may decide to avoid performing this operation.

## 4.7 Account group configuration

This function allows bundling account groups (for example your bank account and related credit cards) and fast switching between them.



To configure an account group, select the **All Accounts/ Config Account Group** menu item.



Mark or clear checkboxes next to account names, press the **Save As** button to save the selection as a group and type its name.



This mode allows deleting, renaming and saving changes in account groups too.

**Note.** The  and  buttons establish the order of accounts in the Account Center list. Highlight an account and press the button to change its position.

<b>Edit</b>
<b>Delete</b>
<b>Duplicate</b>
<b>Move to Account...</b>
<b>Add to Planner...</b>
<input checked="" type="checkbox"/> <b>Included in Budget</b>
<b>Import QIF...</b>
<b>Export...</b>
<b>Reconcile Account...</b>
<b>Delete Old transactions...</b>
<b>Actions</b>

- Edit selected transaction;
- Delete selected transaction;
- Duplicate selected transaction;
- Move selected transaction to another account;
- Creates scheduled transaction based on the selected one;
- Excludes/Includes selected transaction in budget;
- Opens data import window;
- Opens data export window;
- Opens account group configuration window;
- Opens the tool for deleting old transactions.

## 5 Project Center

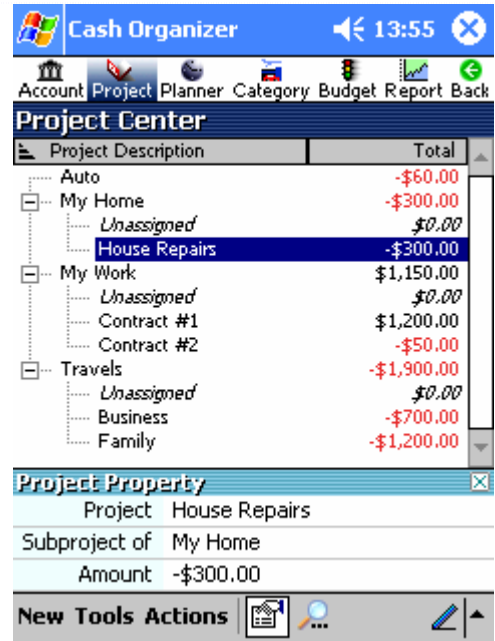
Projects allow you to classify your financial operations by types of activity, which helps you obtain more detailed information on the distribution of your receipts and expenses. Using projects enables you to evaluate deals, profitability of your affiliates or your activity domains, business trip results and so on. Examples of projects:

- Contract # 15
- Trip to New York
- Deal with X company

To get even more detailed information, you can enter several subprojects inside each of the projects. For instance, "Business Trips" project can contain subprojects corresponding to different trips: "London, October 2004", "New York 2004" etc.

In this chapter you'll learn the basic principles of working in the project mode:

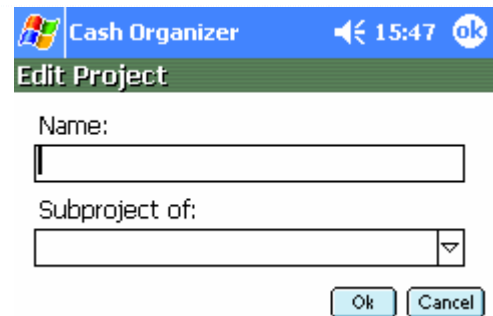
- [How to create, edit and delete projects;](#)
- [How to view the current balance of the project;](#)
- [How to predict the project balance changes.](#)



## 5.1 Create, edit and delete projects

To create, edit or delete projects select the **Project** tab.

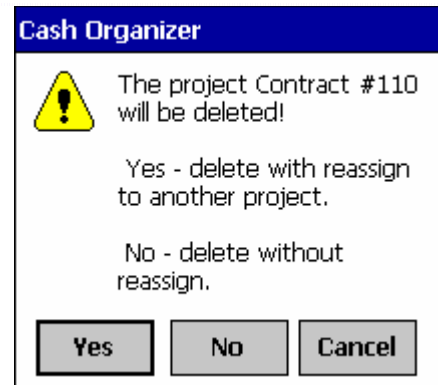
To create a new project, press **New** or select the **Actions/New Project** menu item. The following window will be opened. Enter the project's name into the **Name** field. If required, specify for which of the existing projects the new one will be a subproject (use the ▾ button to open a drop-down list). If there is no text in the **Subproject of** field, the project will be independent of the others.




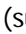
To edit an existing project, highlight it and select the **Actions/Edit Project** menu item. A similar window will be opened. Make your changes and save them by pressing the **OK** button.

To delete a project, highlight it and select the **Actions/Delete Project** menu item. The confirmation window will be opened:


- Choose **Yes** to delete the project and reassign all its transactions to another project. To do this, after pressing the button, select a project which the transactions will be reassigned to;
- Choose **No** if you don't want to reassign the project's transactions to another one (leave them unassigned);
- Choose **Cancel** if you want to cancel deletion.



## 5.2 View current balance of the project

The current balance of the project is the total amount of all related transactions. Highlight the required project and select the **Actions/View Transactions** menu item. You can view the balance in the same way as in the account mode using the balance field. You can switch between the subproject's balance and the balance of the principal project views by double clicking the upper line in transaction list (marked with ). In the principal project list, there is a line that contains each subproject's name and its balance (such lines are marked with ). The balance of the principal project is calculated by summing up the balances of all the subprojects and transactions related to the principal project. You can switch from viewing the balance of the principal project to viewing the balance of the subproject by clicking twice on the subproject's line.

## 5.3 Prognosis of the project's balance changes on selected date

Prognosis of balance changes can be made in the same way as in the account mode. Enter the date for which the prognosis is to be done in the prognosis field. Press the  (this icon will appear on the screen if you have scheduled transactions assigned to the current project) to see a table containing the prognosis for the current project. The basic difference between the prognosis in the project mode and the account mode is the absence of the **Scheduled Balance** line. That is why you can't get final data on the project's expected balance by the selected date (you can only get data on its expected changing).

# 6 Planning Center

There are some differences between scheduled transactions and registered ones:

1. A scheduled transaction can't be completely guaranteed. You can only expect its performance with a certain probability on selected date. It can actually be performed at another time, performed partially or not performed at all.
2. Scheduled transaction can be either single or repeating.

In the transaction lists of accounts and projects, scheduled transactions are marked with red font. In the account mode, scheduled transactions of the current account are in bold type. Scheduled transactions related to other accounts are in regular type (they are shown on the screen in accordance with the program settings). In the project mode, only scheduled transactions related to the current project are visible.

From this chapter, you will learn the general principles of financial scheduling in the Planning Center mode:

- [How to create a scheduled transaction;](#)
- [How to create a scheduled repeating transaction;](#)
- [How to group scheduled transactions;](#)
- [How to use templates;](#)
- [How to make the program remind you of scheduled transactions;](#)
- [How to forecast;](#)
- [How to deactivate a scheduled transaction;](#)
- [How to register a scheduled transaction in parts.](#)

## 6.1 Create scheduled transaction

A scheduled single transaction is a transaction which will be performed only once (for example, you are planning to buy a new computer for your office in a month). To set a scheduled single transaction, switch to the Planning Center mode and press **New**. Then adjust the attributes of the scheduled transaction, which are similar to the attributes of the current transaction.

After you have adjusted all the attributes, press **OK**.



## 6.2 Create scheduled repeating transaction

Repeating transactions take place at certain regular intervals (for example, you pay for your Internet Service every month). To set a scheduled repeating transaction, switch to the planning mode and press **New**. Set all the attributes as you would for a single scheduled transaction. Then select **Repeat** tab.

Specify the periodicity of the scheduled transaction in the **Repeat** field. Press  $\nabla$  in the upper line and select one of the variants of the scheduled transaction's periodicity from the menu.

Then specify in the next line if the scheduled transaction should be entered repeatedly (**Ongoing entry**) or it has finite number of entries (**Number of entries**).

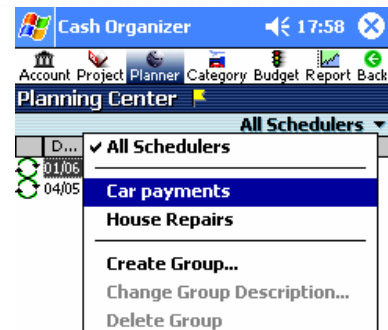
For example, your salary payment is a scheduled transaction that can be performed without an end but a loan payment is a scheduled transaction limited to a certain number of payments. When selecting **Number of entries**, specify how many times the scheduled transaction is supposed to be entered. After you have finished press **OK** button.



## 6.3 Scheduled transaction groups

This function makes navigation easier and allows forecasting for specific groups of scheduled transactions. For example, you can separate business and private transactions based upon the transactions' purpose.

To create a new group, select the **Actions/Create Group** menu item and type its name. Scheduled transactions could be assigned to a group during registering (**Repeat** tab) or you can highlight a transaction in the list and use the tap&hold technique to open a pop-up menu.



When a group is selected, only its transactions appear in the list and forecasting is available for that group only. Select **All Schedulers** to return to all transactions list.

**Note.** The **Delete Group** function does not delete transactions in selected group, but makes them unassigned.

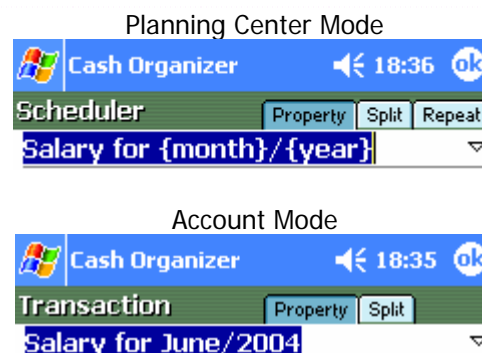
## 6.4 Template usage in the transaction's name

When setting repeating transactions, you may often need to specify dates that the scheduled transaction relates to. For example, if you set your salary receipt as a scheduled transaction, it would be useful to refer in the transaction name to the period for which it's paid. ("Salary for January", "Salary for February" etc.). To make the program specify a period in the transaction's name, you should give the program instructions in the form of keywords (templates). You can use the following keywords:

- **{year}** – current year,
- **{month}** – current month,
- **{week}** – number of the current week,
- **{date}** – current date,
- **{day}** – current day.

When typing keywords in the name of transaction, use the braces.

For example, if you want the program to automatically input the name of the current month and year in the name of a salary receipt transaction, set the transaction's name as: **Salary for {month}/{year}**. The program will automatically add the current month and year into the transaction's name. For example, the transaction dated with May 15, 2004 will have the name **Salary for May/2004**. It is important to remember that the values of the day, date, week, month or year relate to the date for which the transaction is scheduled and not to the date when transaction is set. For example, in January 2005 the mentioned transaction will be shown as **Salary for January/2005**, even if it was set in 2003.



You can perform arithmetic operations of addition and subtraction with the keywords. These operations should be indicated inside the braces after the keyword: **{date+1}**, **{month-2}** etc. For example, if you pay rent for your office for the previous month, you can set the name as **Lease {month-1}/{year}** for this scheduled transaction. In June 2004 the transaction will be named **Lease May/2004** and in January 2005 it will be **Lease December/2004**.

If you need to specify several different terms in the transaction's name, use separate braces for each term. For example, you would like to set a transaction for the payment of Internet Service for three previous months and show in the transaction name the names of the first and the last months. Set the transaction name to: **Internet {{month-3}/{year}}-{{month-1}/{year}}**. Note that month and year related to the first month are in separate braces as well as the month and year related to the last month. Then the transaction dated with July 2004 will be indicated as **Internet April/2004-June/2004**.

**Note.** If you do not use additional braces, all the arithmetic operations with the same parameter will be summed up, and the name will use a value of the parameter obtained as the result of summation. For example, if you set the name of the above transaction as **Internet {month-3}/{year}-{month-1}/{year}**, two arithmetic operations ("-3" and "-1") will be performed for the parameter. As a result, the name of the transaction will be: **Internet March/2004-March/2004**.

**Note.** Sometimes (for example, in order to make the search easier) you may wish to save scheduled repeating transactions with the same name. In this case, you can use keywords in **Note** field to specify the transaction's date.

### 6.5 Scheduled transaction reminder


Sometimes you may wish to have the program remind you of upcoming scheduled transactions. This will allow you to not forget about expected receipts and expenditures and plan your financial activity accordingly. You may select how many days in advance you should be notified of the scheduled transaction and if it should be entered into the account automatically. For this purpose, select **Repeat** tab when creating the scheduled transaction.

Enter into the **Remind** field for how many days in advance you would like to get a reminder of the scheduled transaction. Mark the **Enter this into my account automatically** if you want the scheduled transaction to be entered at the specified date automatically.



Each time you run the program, you will see a message containing the list of all the scheduled transaction for which the reminder is required. In the account and project modes transactions lists all the scheduled transactions for which the reminder is required will be listed (they are marked with a grey font and followed with ).









### 6.6 Prognosis of scheduled transactions

When analyzing financial operations, prognosis of all the receipts and expenditures by any specified date is a very important step. In the planning mode, you can evaluate the amount of planned receipts and expenditures for all the transactions scheduled irrespective of which account or project they relate to. To get a prognosis based on scheduled transactions, switch to the planning mode, enter the **Forecast** date and press  (this flag will not appear if there are no scheduled transactions due up to the selected date). You'll see a table containing information on the amount of the scheduled receipts and expenditures:

- **All Scheduled Transactions** or scheduled transaction group;
- **Scheduled** – forecasting date;
- **Amount** – the amount of all scheduled receipts and expenditures;
- **By Accounts, By Categories, By Projects** and **By Contacts** – information on distribution of the scheduled receipts and expenditures.

<b>All Scheduled Transactions</b> <i>Scheduled 02/06/04</i>
<b>Amount:</b> \$900.00
<b>By Accounts</b> WestPack (USD): \$1,000.00 Cash (USD): -\$100.00
<b>By Categories</b> Auto:Service: -\$100.00 Salary: \$1,000.00
<b>By Projects</b> Auto: -\$100.00 My Work:Contract #123: \$1,000.00
<b>By Contacts</b> John Brown: \$1,000.00

## 6.7 Inactive scheduled transactions

By default all scheduled transactions are created as active ones, i.e. when they come due they are entered into the transaction list and have effect on the planned balance. Single scheduled transactions in the planning mode are marked with , and repeating scheduled transactions with . If due to some reasons, you want to place a scheduled transaction into an inactive state, click  or  next to the transaction. The transaction will become inactive and will be marked with . If you want to make the scheduled transaction active again, click ; it will be changed with  or .

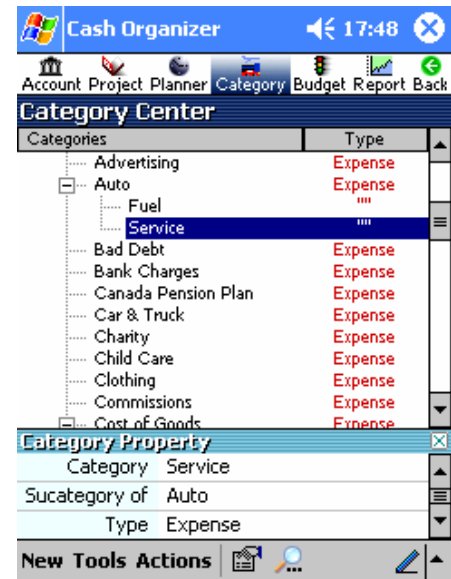
## 6.8 Partial performance of scheduled transaction

Sometimes a scheduled transaction can be performed in several parts. For example, you set a scheduled transaction for your salary receipt but then decided to get some money in advance. In this case, you may need to perform the transaction in parts, with another amount. Switch to the account or project mode and click the transaction being partially performed. Change the transaction's amount and other attributes of the transaction (if required) and press **OK**. The transaction for the specified amount will appear in the list of the registered transactions. In the list of the scheduled transaction, there will remain a transaction for the amount equal to difference between the scheduled amount and the actual amount of the performed transaction.

# 7 Category Center

Categories allow sorting your income and expenses into meaningful groups. The program contains a default list of categories you can use for classification of your transactions. You can create your own categories and delete unneeded ones.

Like projects, categories can contain subcategories. Usage of subcategories allows dividing major categories into less significant ones. For example, "Car" category can contain such subcategories as "Service", "Petrol", "Repair", etc.



## 7.1 Create and edit category

To create, edit and delete categories select **Category** tab.

To create a new category, press **New** or select the **Actions/New Category** menu item. The following window will be opened.

Enter the category's name into the **Name** field. If required, specify for which of the existing category the new one will be a subcategory (use the ▾ button). If there is no text in the **Subcategory of** field, the category is independent of the others.

To edit an existing category, highlight it and select the **Actions/Edit Category** menu item. A similar window will be opened, make your changes and save them by pressing **OK** button.

## 7.2 Delete category

To delete a category, highlight it and select the **Actions/Delete Category** menu item. The confirmation window will be opened:

- Choose **Yes** to delete the category and reassign all its transactions to another category. To do this, after pressing the button, select a category which the transactions will be reassigned to;
- Choose **No** if you don't want to reassign transactions of the category to another one (leave them unassigned);
- Choose **Cancel** if you want to cancel deletion.

# 8 Budget Center

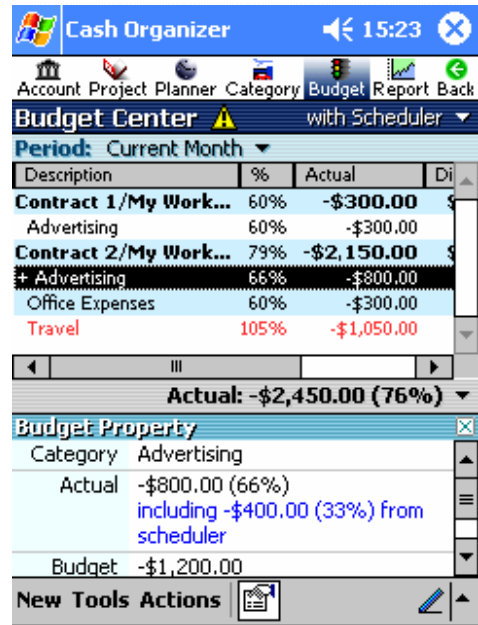
This chapter will help you to get practical skills for corporate finance as well as your private finance management. You will learn:

- [How to plan your budget using Cash Organizer;](#)
- [How to create new budget group;](#)
- [How to add categories to group;](#)
- [How to remove categories from group;](#)
- [How to rename budget group or change assigned project;](#)
- [How to delete budget group;](#)
- [How to set category limits;](#)
- [How to set a date range for budget planning;](#)
- [How to view the results;](#)
- [How to exclude transactions from the budget;](#)
- [How to create a transaction report;](#)
- [How to set exceeded limits notifications.](#)

## 8.1 General principles

Budget planning is the main task of financial activity. A budget, planned correctly, will let you know exactly how much money is at your disposal and how much you can spend for certain purposes – for purchasing of new equipment for your company, to repair your house and so on. Select the categories, receipts, expenditures and projects which you are going to include in your budget and evaluate the approximate amount of receipts and expenditures for each of the categories. You can plan you budget by presenting it in the form of a table.

When analyzing the budget, it is very important to compare the planned receipts and expenditures with actual ones. That is why there are four figures in the category's line, which allow evaluation of your budget efficiency: actual balance, planned balance, difference between them and percent of consumption. You are supposed to enter values of the planned budget only; the actual balance and the difference will be calculated based on the actual receipts and expenditures.



Cash Organizer allows creating budget groups in two ways:

1. Built on categories only. This is a simplified kind of budget groups. Transactions will be distributed to budget groups by categories.
2. Built on projects and categories. This kind of groups allows much more possibilities in building budget; transactions are distributed by projects and categories.

In reality, budgets built only on categories rarely suits for business planning. Each company could have several offices, divisions, contracts that need their own budget allocation. The different units often use the same categories of transactions and the situation becomes complicated. How do you take control in a simply way and build good budget? Correctly designed projects could significantly relieve that problem that faces us.

For example, a company gets two similar contracts. To make two separated budgets for each of the contracts, all that is required is to create projects "Contract #1" and "Contract #2" and build two groups on these projects.

Projects designed in the way shown in the picture will allow you to create separate budgets for all contracts (the same categories of transactions will be separated on entering each level) and get an overview of your whole financial situation. Due to the fact that groups could be built on two parameters (project and category) your budget management is under complete control.

My Work	\$2,000.00
Unassigned	\$0.00
Contract #1	\$1,200.00
Contract #2	\$800.00

Listed below are the main principles of a budget's operation:

- The program allows the simultaneously use of two kinds of budget groups;
- Each transaction can only be assigned to one budget group;
- The program uses the following hierarchy when filtering transactions:
  - a. Subprojects;
  - b. Projects;

- c. Subcategories;
- d. Categories.
- One category could be used once in groups built on categories and several times in groups built on projects and categories.

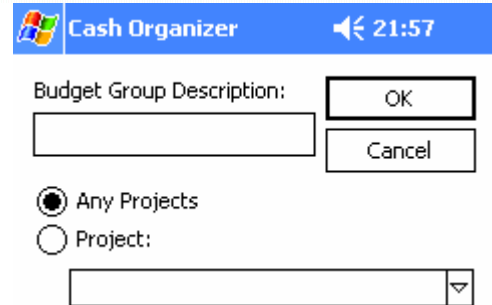
## 8.2 Create new budget group

To create a new budget group, press **New** or select the **Actions/New Budget Group** menu item. The following window will be opened.

Enter the budget's name into the **Budget Group Description** field and choose a project from drop-down list if the budget should be built on project and categories. Press **OK** to save it.

To edit an existing budget, highlight it first and select the **Actions/Edit Budget Group Description** menu item. A similar

window will be opened, make your changes and save them by pressing the **OK** button.

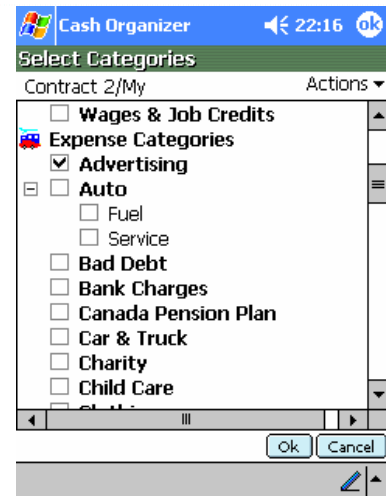


## 8.3 Add new category to the budget

After creating a new budget, you should insert some categories into it. To add new categories, highlight the required budget group and select the **Actions/Add/Del Categories to Group** menu item.

You will see the list of categories on the screen. Mark those you are going to include in the budget (or clear the marks next to those categories you are going to exclude). To make the process easier, use the **Actions** menu. You can mark all the receipt and expenditure categories and transfers at once or clear all subcategories. On having specified the categories to be included in the budget, press **OK**.

**Note.** Press the **Update** button each time it appears on the screen to recalculate your budget since the program does not do it automatically.



## 8.4 Delete category from the budget

If you want to delete a category from the budget, highlight its name and select the **Actions/Delete Category from Group** menu item.

## 8.5 Rename budget or change assigned project

If, for some reason, you wish to change the name of an existing budget or assigned project, highlight it and open the **Actions/Edit Budget Group Description** menu item. You will see a window similar to that for a new budget creation. Make changes and press **OK**.

## 8.6 Delete the budget group

To delete a budget, highlight it and open the **Actions/Delete Budget Group** menu item. You will see a warning message; select **Yes** to delete the budget or **No** to cancel deletion.

## 8.7 Set the category limits

Setting limits for receipts and expenditures for each of the categories is one of the most important steps in the budget planning. The total limit of the budget is the total amount of receipts and expenditures of all categories assigned to that budget. To set limits for receipts or expenditures by category, highlight a budget category and open the **Actions/Edit Category Limit** menu item.

You can set two types of the receipts and expenditures limits in the budget: constant value of the receipts (expenditures) per month or different values for different months.


To set constant value of the expenditures (receipts) per month select **Recurring Limit** and enter the fixed amount in the monthly budget (in the currency units by default). The program will automatically recognize if this amount is for receipts or expenditures based upon the category's description.

To set different values of expenditures for each month select the **Custom Limit** and enter amounts next to the name of each month.

After you have set the limits for the receipts (expenditures) press **OK**.

The screenshot shows the 'Cash Organizer' dialog box with the 'Category: Advertising' selected. The 'Recurring Limit' option is selected, with a value of '-500.00' and the unit '\$ each month'. The 'Custom Limit' option is unselected. Below, there are input fields for each month from Jan to Dec, all set to '0.00' with a '\$' symbol. At the bottom, it says 'US Dollar (USD)' and has 'Ok' and 'Cancel' buttons.

## 8.8 Set a date range for budget planning

When you have set your receipt and expenditure limits in the budget, it is time to set the interval for budget planning. Tap on **Period** and select required date range from the list. If you wish to set a custom period, select **Customize Date** and specify the starting and ending dates in the **From** and **To** fields or tap on the  button to select a predefined period.

You can include scheduled transactions into your budget by changing **without Scheduler** option to **with Scheduler**. Categories that you have assigned scheduled transactions to will be marked with "+" next to its name.

To recalculate the budget, press **Update** button.

The screenshot shows the 'Cash Organizer' dialog box with the 'Budget Center' selected. The 'Period' dropdown is set to 'Current Month'. A list of predefined periods is shown: Last week, Last Month, Last Year, Current week, Current Month (selected), Current Year, Next week, Next month, Next Year, and Customize Date. At the bottom, there are 'New Tools Actions' and a 'Update' button.

## 8.9 View the results

After you have set the budgets and their terms, you can return to viewing the results. In the budget list you can see information on each of the groups as well as on each of the categories fixed in the budget. Names of categories where actual expenditures exceed planned ones are marked with red font. Pay attention to those categories and adjust your financial activities.

To view information on all the existing groups see the **Actual** line. There you will find actual expenditure amount for all the existing budgets and a percentage (in parenthesis) of the budget's utilization. By pressing the **Actual** amount, you will get detailed information including actual and planned amount for all the groups and the difference between them.

<b>Budget Center</b> <i>01/05/04 - 31/05/04</i>
<b>Actual:</b> -\$2,000.00 (62%), including -\$400.00 (12%) from scheduler
<b>Budget:</b> -\$3,200.00
<b>Difference:</b> \$1,200.00

## 8.10 Exclude transactions from the budget

Sometimes you may need to exclude a transaction from the budget, despite the fact that the category the transaction relates to, is included in the budget. In the account or project mode, select the transaction to be excluded from your budget. Highlight that transaction (use tap&hold technique to open a pop-up menu) and select **Exclude from Budget**. To include that transaction in budget again, repeat the steps above, but select **Include in Budget**.


## 8.11 Budget transactions report

To see all transactions assigned to a group or single category, highlight its name and select the **Actions/Show Transactions** menu item. A transaction report will be created. For more information on the report presentation form and its further processing, please see the [Report Center](#) section.

## 8.12 Notification of a budget limit exceeding

The program will automatically notify you in any mode if a budget limit is exceeded in one of the categories after you have registered a new transaction. You will see a message of the budget limit exceeded including the name of the corresponding category. Getting such information will enable you to make quick decisions on your finance management.

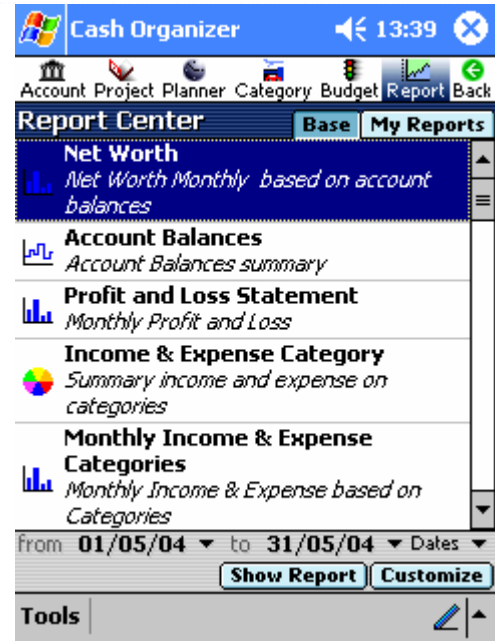
<b>Budget Alarm</b> <i>01/05/04 - 31/05/04 with Scheduler</i>
<b>Contract 2/My Work:Contract #2</b> Travel <b>Overflow 5%</b>

This icon  in Budget Center notifies you of budget limit exceeded. Tap on it to get detailed information.

# 9 Report Center

In the domain of finance, it is often necessary to make a report. Such a report, when made correctly, allows the retrieving the required information in an easy to understand form. From this chapter you will learn:

- [How to make financial reports;](#)
- [How to adjust a filter;](#)
- [How to choose the report presentation form;](#)
- [How to get detailed information on the report just produced;](#)
- [How to save the report;](#)
- [How to transfer data into other programs;](#)
- [How to save time with My Reports mode;](#)
- [How to print out a report.](#)




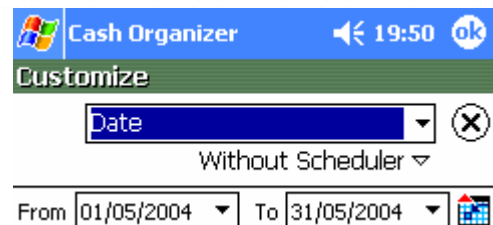
## 9.1 Reporting

To make a report, select the **Report** tab. You will see a list of predefined forms and several buttons for adjusting settings of the report. Select a form, date range and press **Show Report** button. The report will appear on the screen.

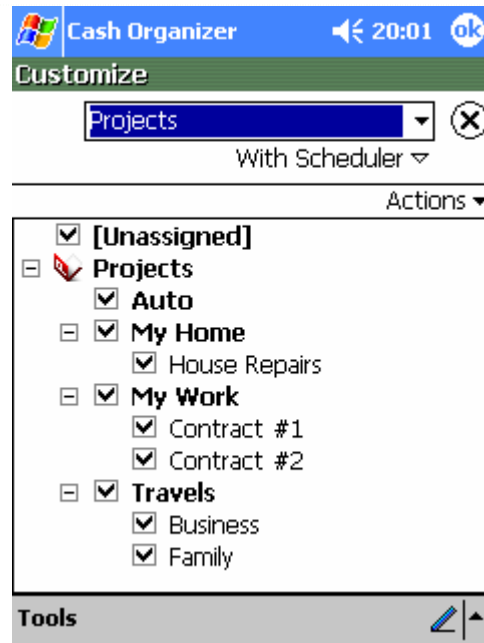
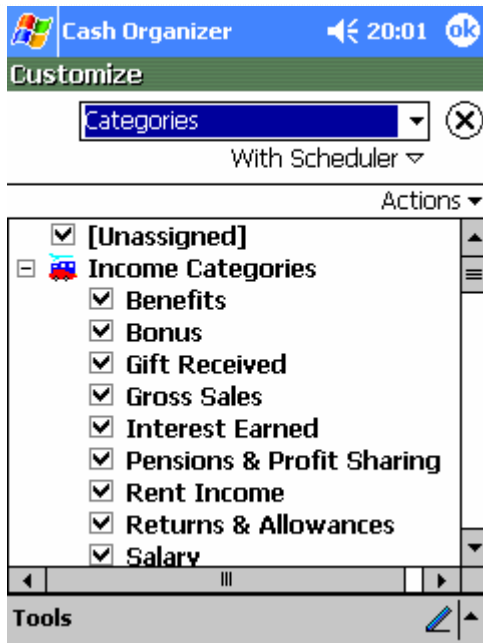
## 9.2 Adjusting filter

Usage of a filter allows determining what transactions are to be considered while making a report. To adjust a filter, press the **Customize** button. You will see a window that allows adjusting parameters of the filter. Select a filter group from the drop-down list:

Select **Date** to set a date range. You can set the dates using the built-in calendar or press the  button to select a predefined period.



By selecting **Accounts**, **Categories** or **Projects**, you can indicate to what accounts, categories or projects the transactions to be used in the report are related.



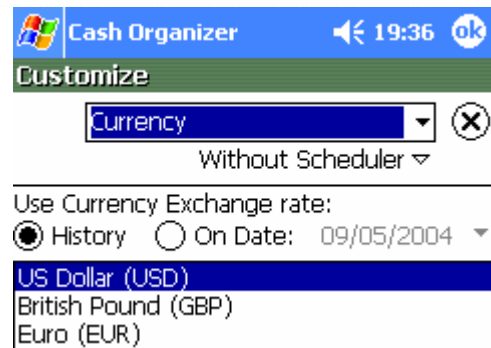
By selecting **Details**, you can indicate some details for the report's presentation:

- **Amount** - amount of the transactions to be considered while making the report;
- **Number** – which transaction numbers to be considered while making the report;
- **Mark As** - marks of the transactions to be considered in the report;
- **Text** - inclusion of transactions containing the mentioned text into the report;
- **Void** - if you marked this option, voided transactions will not be included into report.



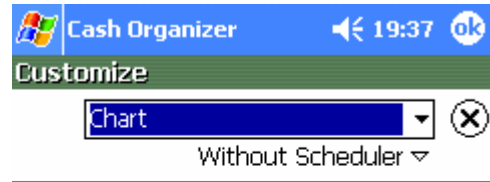
By selecting **Currency**, you may indicate the currency into which all the amounts should be converted while making the report. Choose the exchange rate for report:

- **History** - all transactions will be converted with different rates, corresponding to each transaction exchange rate from currency history;
- **On Date** - all transactions will be converted with the same exchange rate corresponding to selected date from currency history.



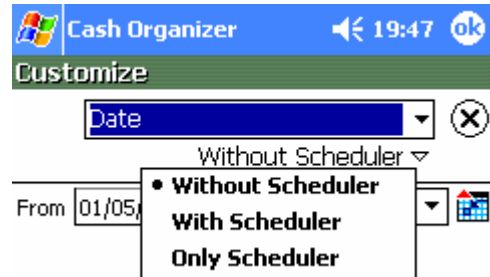
By selecting **Chart**, you can change some details of the report's presentation:

- **Show in 3D** - three-dimensional image (for pie or bar graphs);
- **BW Color (Use Patterns)** – usage of black and white colors and various types of hatching (if this function hasn't been set, color palette will be used);
- **Show X Gridline, Show Y Gridline** – show horizontal (X) and vertical (Y) axes on the graph.

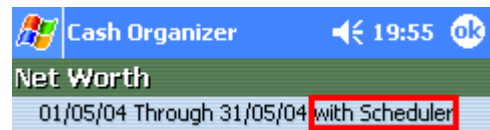


Cash Organizer allows you to create various types of report, select an option:

- **Without Scheduler** to create a report based on registered transactions;
- **With Scheduler** to create a report based on registered and scheduled transactions;
- **Only Scheduler** to create a report based on scheduled transactions only.



If scheduled transactions are included into report, Cash Organizer will mark them with a different color and italic font in the list and **with Scheduler** will appear in the header.



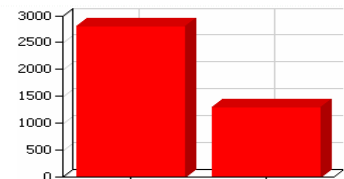
**Note.** Cash Organizer automatically stores last Customize settings separately for each report and will use them by default next time.

**Note.** To cancel the filter parameters, use **Tools/Reset Filter** menu. The program's default filter settings will be restored.

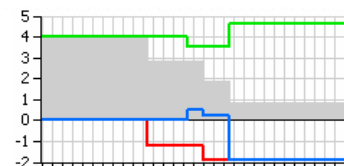
### 9.3 Selecting the report's form

Depending on what information is supposed to be presented in your report, you can select one of the report's forms.

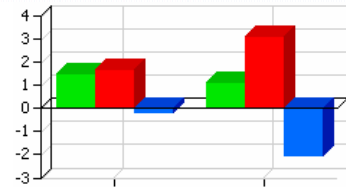
**Net Worth** is a net value report (financial term that means a total sum of all receipts, expenditures and the initial balance). Such a report allows you to follow changes of liquid value of your company etc. Usually it is presented in the form of a bar graph.



**Account Balances** - this kind of report allows showing balance dynamics for each of the accounts selected by the filter and for all the accounts together.



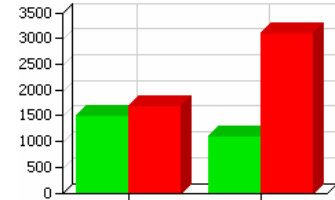
**Profit and Loss Statement** report is a comparison between receipt and expenditure values.



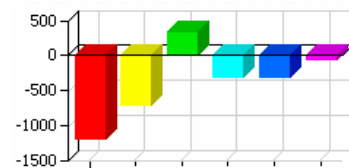
**Income & Expense Category** is a report showing the distribution of receipts and expenditures among the categories.



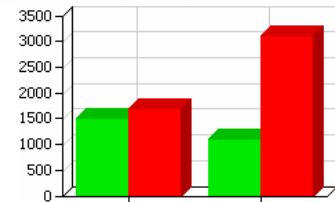
**Monthly Income & Expense Categories** is a report showing monthly ratio of receipts and expenditures in all the categories selected by the filter.



**Project Report** is a report showing distribution of receipts and expenditures between the projects.



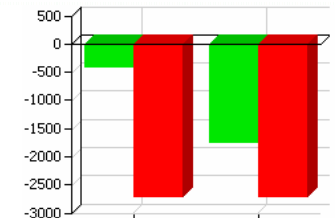
**Monthly Project** shows the ratio of receipts and expenditures in all the projects selected by the filter.



**Transaction Report** is a list including all the transactions selected by the filter.

<input checked="" type="checkbox"/>	03/05/04 House repair	-\$300.00
<input checked="" type="checkbox"/>	03/05/04 Business trip	-\$700.00
<input checked="" type="checkbox"/>	08/05/04 Salary for June/2004	\$1,000.00
<input checked="" type="checkbox"/>	08/05/04 Auto	-\$50.00
<input checked="" type="checkbox"/>	08/05/04 Salary for June/2004	\$100.00

**Budget Monthly** is a report showing the ratio of the scheduled and actual receipts and expenditures of the chosen budget.



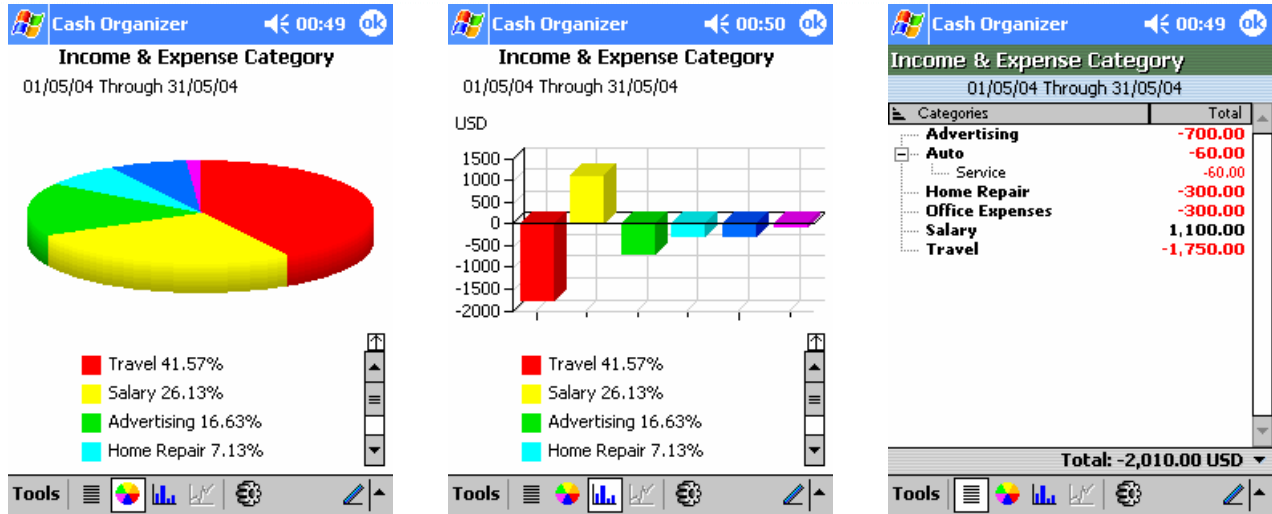
## 9.4 Process the report made

Processing of the report includes:

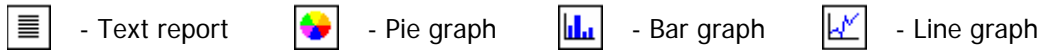
### 9.4.1 Presentation form for the report selection

Cash Organizer allows choosing between four forms of presentation for the reports: text report, pie graph, bar graph and line graph. Whichever form you prefer, each report type has one which is the most typical

default form. However, you can select other presentation forms for most of the reports. See below examples of variety of presentation forms for the "Income & Expense Category" report.



You can select the required presentation form by clicking the corresponding icon in the menu bar:



See the table below to check what presentation forms can be used for each type of reports. Allowable forms are marked with "+", default presentation forms are marked with "++".

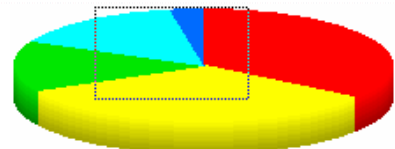
Type of reports	Presentation form				
Net Worth		+	+	++	+
Account Balances		+			++
Profit and Loss Statement		+		++	+
Income & Expense Category		++	+	+	
Monthly Income & Expense Categories		+		++	+
Project Report		+	++	+	
Monthly Project		+		++	+
Transaction Report		++			
Budget Monthly		+	+	++	+


### 9.4.2 Changing filtration parameters

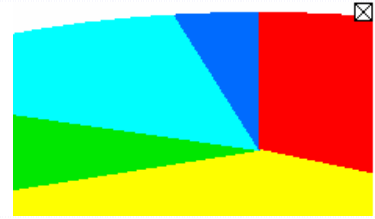
You may need to change the filtration parameters for a report which has already been produced. Select **Tools/Customize** or press the button. You will see the same window as for filtration parameter adjusting. Change the required filtration settings and press **OK**. The report will be changed accordingly.

### 9.4.3 View small-sized elements



Graphic reports may contain some small-sized elements that are difficult to be seen in the default scale. You can view some parts of the bar, pie or line graph in more detail. For this purpose, select an area of the report to be viewed in the larger scale.



After that, the selected element will become of the size of the whole report. By pressing , you can return to the whole report again.

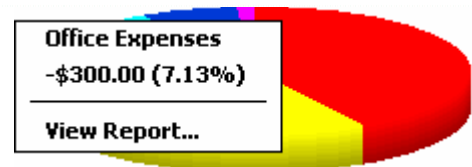


#### 9.4.4 Open a legend completely or partially

Graphic reports are always accompanied by a legend explaining the meaning of each color used for the graph. When too many colors are used, the legend may be too big for the screen and only several upper lines of the screen can be seen. If there is no room on the screen to show the legend as a whole, use the scroll bar next to it. Moving the slider along it, you may view the whole legend. There is an icon  above the scroll bar. By pressing it, you can open the whole legend on the screen (part of the screen containing the graph will become smaller). After opening of the legend on the screen, the icon  appears above the legend (to the right). By pressing the icon, you can return to the initial presentation (complete image of the graph and partial presentation of the legend).

#### 9.4.5 Getting detailed information on the report's elements

While viewing the graphic report, you may need detailed information on some elements of the report (for example, amount of receipts or expenditures of the category in the report like "Income & Expense Category", account balance for the selected date in the report "Account Balances" etc.).



You may get the required information by tapping on the corresponding element of the report. A context menu containing the required information will appear.

#### 9.4.6 Create an auxiliary report

If necessary, you may get additional information on an element of the report not only in the form of a table, but also in the form of an auxiliary report. For such purpose, select the corresponding element of the graphic report and select the command **View Report** in the context menu. You may also create an auxiliary report by double clicking the element of the graphic report which you are interested in. The type of the original report defines the type of the auxiliary report.

Type of the original report	Type of the auxiliary report
Net Worth	Account Balances
Account Balances	-
Profit and Loss Statement	Transaction Report
Income & Expense Category	Transaction Report
Monthly Income & Expense Categories	Income & Expense Category
Project Report	Transaction Report
Monthly Project	Project Report
Transaction Report	-
Budget Monthly	Transaction Report

After you have viewed the auxiliary report, press **OK** to get back to the original report.

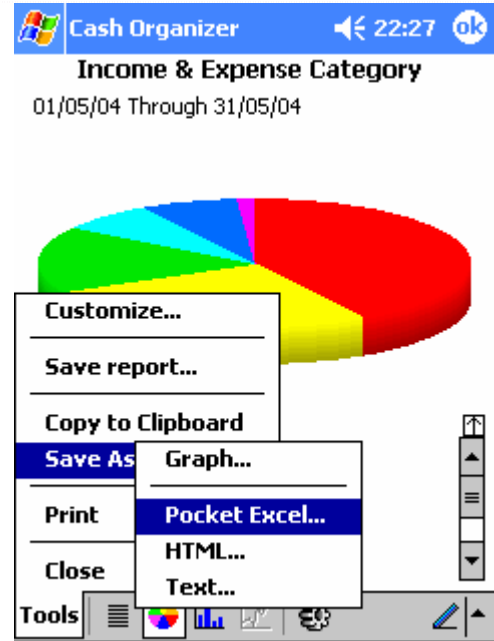
## 9.5 Save report to file

You can use your report in other programs: graphic editors, text processors, spreadsheets and HTML editors. For these purposes, you must save a report to file.

When a report is created, select the **Tools/Save As** menu item and indicate the file type depending on how you're going to use it in the future:

- **Graph** if you're going to use the report as a graphic object;
- **Pocket Excel** to save the report in the form of an electronic worksheet;
- **HTML** if you're going to use the report for working in the Internet;
- **Text** to save the report as a text file.

Then type file's name, select its location and press **OK** to save the file.



## 9.6 Transfer data into other programs

Financial data (graphic and text) may be easily transferred directly into other application. To do this, create a report and switch to the required presentation. Select **Tools/Copy to Clipboard** and use the **Paste** function of the target application.

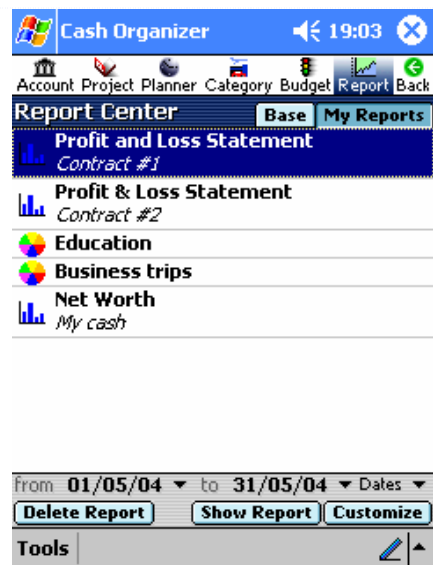
## 9.7 My Reports mode

**My Reports** mode allows saving often-used reports and its customized settings. For example, you can save different settings for the same report type and run it immediately, without the need to customize it first. This function saves all the settings except a date period and currency.

To save a report, create it first (you may use a previously saved report as a template) and use **Tools/Save Report** menu.

To change a saved report's filter, highlight it and press the **Customize** button. A report adjustment window will be opened, make the changes and press **OK**.

**Delete Report** button deletes the selected report.



## 9.8 Printing

When a report is created, you may send a printout of it directly to a printer. To do that, select **Tools/Print** menu. For some reports, the possibility to choose columns to include/exclude from a printout is available. If this window appears on the screen, mark or clear the appropriate checkboxes and press **OK**.

The following settings are available in the next window:

- Printer selection;
- Communication port;
- Color or monochrome printing;
- Paper size;
- Orientation.



The **More** button allows modification of the following settings:

- Custom margins;
- Page range;
- Draft mode;
- Data compression.

Press **OK** to save the settings and close the window.

After you have adjusted all the parameters align the ports (if you use infrared connection) and press **OK** to start printing.



## 10 Program Settings

Before you start working with Cash Organizer, it is necessary to choose the program settings, i.e. main parameters of operation. To switch to the program settings, select **Tools/Options**. Then select the tab corresponding to the group of the program settings:

- [Currencies](#) – exchange rate settings and currency history;
- [Screen view](#) – screen view settings;
- [Password](#) – settings of the program access password.

## 10.1 Currencies

To add a new currency to the list, press the **Add** button. A list of currencies that can be used by the program will appear on the screen. Select the required one and press **OK**.

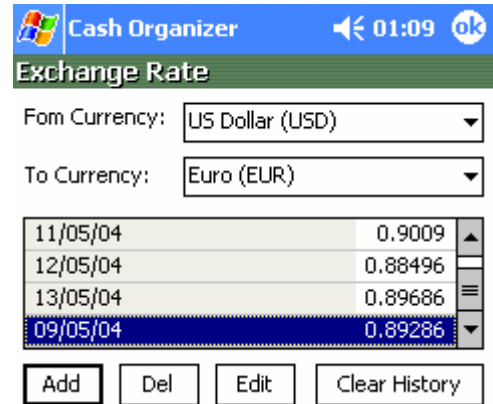
To delete a currency from the list, select it and press **Del**. To avoid accidental deletion of the currency from the list, the program will ask for your confirmation.

The **Edit** button allows changing a symbol that will represent the currency in the transaction list.

To select a default currency, highlight it and press **Set As Default** button.

Every time you enter a new transfer between accounts using different currencies, Cash Organizer automatically opens an exchange rate confirmation window and saves those values in the exchange rate history table. Press the **Set Exchange Rate** button to open it.

Select the **From Currency** and **To Currency** you want to see exchange rates between. This mode allows you to **Add**, **Delete** and **Edit**, as well as to **Clear History** of exchange rates between selected currencies.



## 10.2 Screen view

To adjust screen view settings select the **View** tab.

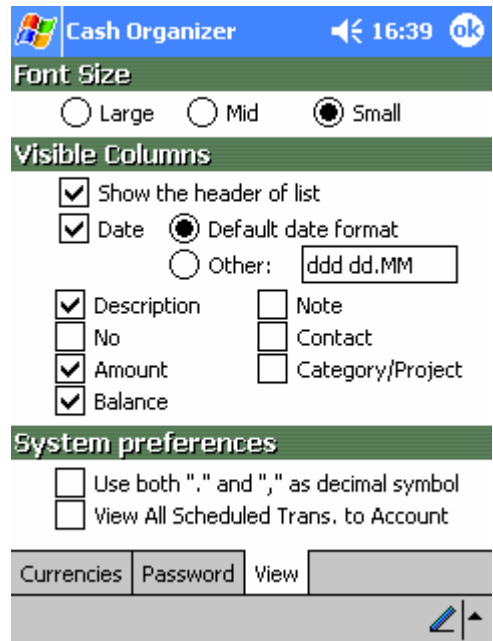
Select the font size in the transaction list; Large, Middle or Small font. The text of the list will be of the selected size:

- **Large** font    04/29 Same extra money    -500.00  
(uses Clear Type™)
- **Mid** font    04/29 Same extra money    -500.00
- **Small** font    04/29 Same extra money    -500.00

To show the columns headers of the transaction list on the screen, select Show the header of list.

Also in the Visible columns section, mark the checkboxes next to columns to be shown in the transaction list:

- **Date** – date of the transaction;
- **Description** – name of the transaction;
- **No** – number of the transaction;
- **Amount** – amount of the transaction;
- **Balance** – balance of the account considering all



- the preceding transactions;
- **Note** – user's notes;
- **Contact** – contacts concerning the transaction;
- **Category/Project** – category and project of the transaction.

By selecting the function **Use both "." and "," as decimal symbol** you'll be able to enter the amount of the transaction using both "." and ",". If you haven't selected the function the computer will only correctly recognize ",". This means that "." will be ignored (for instance, "7.00" will be recognized as "700").

By selecting **View All Scheduled Trans. to Account**, you will be able to view in the account mode all the scheduled transactions. If you have not selected the function, only scheduled transactions related to the current account will be shown in the list.

## 10.3 Password

You can protect your information from unauthorized access by setting a password. For this purpose, select the **Password** tab:

If you want to set a password, select the function **Set Password**. Then enter your password – a sequence of any symbols you like in the field **Input New Password**. To confirm your password, enter it in the field **Repeat New Password**. All the symbols you enter will be shown as "\*". You will be asked to enter your password each time you run the program.

You can also set the time upon which your Pocket PC switches into a password-protected mode if no operation was performed by the program during this time. Select the **Screen-Saver-Password** function and set the interval at the end of which this function will be activated. At the end of the selected time, the computer will switch into a password-protected mode. Upon attempting to continue working with the program, you will be asked for a password.

**Note.** While typing a password, pay your attention to the symbols' register. If you make a mistake three times while entering the password, the program will be blocked. You will be forced to soft reset your Pocket PC to renew the program.

If you want to cancel a password that you have set, move to the settings mode and clear the **Set Password** checkbox. Canceling the **Set Password** automatically cancels the **Screen-Saver-Password** function too.


When all adjustments are set, press **OK**.



## 11 Today Plug-in

Cash Organizer's Today plug-in allows retrieval of information without launching the program and works in two modes:





1. Account mode presents all accounts, current balances and total summary.
2. Scheduled transaction mode presents all planned transactions due today and transaction summary.

Cash Organizer protects your financial information from unauthorized access (if password is set). Click on input area; enter the password and push the  button to gain access to your data. You can block access and hide the information at anytime by pushing this button again.



Total 2 050.00\$		
Today 2 050.00\$		
Actions ▾		
Account	Total	Today
<input checked="" type="checkbox"/> VISA	-1 250.00\$	-1 250.00\$
<input checked="" type="checkbox"/> WestPack	3 000.00\$	3 000.00\$
<input checked="" type="checkbox"/> My cash	300.00\$	300.00\$

3 Schedules 880.00\$		
Date	Scheduled	Amount
30/12/02	Salary	1 000.00\$
30/12/02	Dining	-20.00\$
30/12/02	Auto insurance	-100.00\$

-   buttons (replacing each other) switch between **Account** and **Schedule** modes;
-   Click on this button to hide/show details.

Total 2 050.00\$		
Today 2 050.00\$		
Actions ▾		

Total 2 050.00\$		
Today 2 050.00\$		
Actions ▾		
Account	Total	Today
<input checked="" type="checkbox"/> VISA	-1 250.00\$	-1 250.00\$
<input checked="" type="checkbox"/> WestPack	3 000.00\$	3 000.00\$
<input checked="" type="checkbox"/> My cash	300.00\$	300.00\$

Actions ▾ – Quick selection of the accounts groups, the balance shown will also change:

- **Select All** - select all the accounts in the list;
- **Clear All** - deselect all the accounts in the list;
- **Save Set** - save selected accounts as a group;
- **Select Set** - select the required group of accounts;
- **Delete Set** - delete the account group.



To activate/deactivate the plug-in:

1. Select **Start / Settings / Today / Items**;
2. Mark or clear Cash Organizer's plug-in checkbox.

## 12 Working with Data

When using the program, it is very important to ensure security of the database and the data's ability to be used by other programs. From this chapter you will learn:

- [How to create an archive data file;](#)
- [How to restore financial data from a backup file;](#)
- [How to clean up a financial database;](#)
- [How to perform data exchange between Cash Organizer and other programs.](#)

## 12.1 Create and renew archive data file

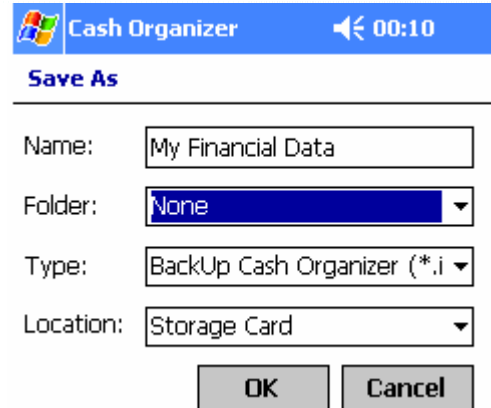
Storage of information in archive data files allows you to:

- Ensure information safety;
- Work with different databases (each of them is kept in a separate file);
- View history of your financial state changes in the past (using the previously saved databases).

At the first saving, the program creates an archive data file; at future savings, you can either create a new archive data file or renew the existing one. To create (renew) the archive data file, select **Tools/File/Backup**.

To create a new archive data file, adjust the required saving parameters in the appropriate fields of the window: file name, folder, and location. Then press **OK**.

**Note.** If you indicate "Main memory" as the file location, you may lose your data in the event of complete battery discharge. To avoid any data losses save the file using external storage.



When renewing the existing archive data file, all the saving parameters are indicated in the appropriate fields. Press **OK** to confirm.

Every time you try to exit the program using **Tools/Exit** menu, the program always offers to renew the existing archive data file or to create a new one.

## 12.2 Restoring existing archive data file

You can switch to processing the data from the archive file at any time. For this purpose, select **Tools/File/Restore**. You will see the list of all archive data files stored in your Pocket PC. Click the file to start a restore process.

**Note.** When restoring an archive data file, you lose current database. Do not forget to backup your data before restoring.

## 12.3 Clean up the database

If you want to create a new database, it is necessary to clear the existing one. To clear the database, select **Tools/File/Database clean up**. The existing database will be deleted and the program will be closed. All unsaved data will be lost.

After you run the program again, you can start creating a new database. The program will work like for the first time: it will offer to create your first account etc. If necessary, you can use the existing database stored in an archive data file.

## 12.4 Data exchange with other applications

Cash Organizer allows sharing financial data with other programs:

### 12.4.1 Synchronization with Microsoft Money®

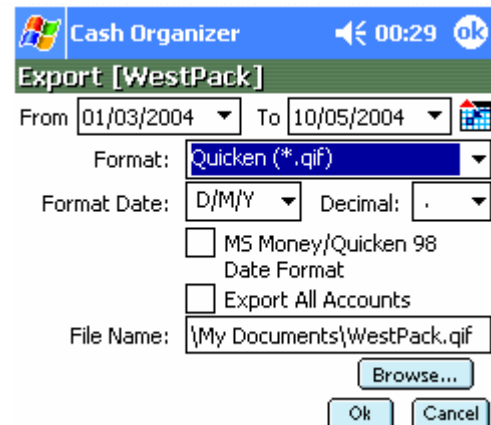
An additional [MoneySync module](#) allows to have your data synchronized with Microsoft Money® exactly in the same way as if you synchronize your appointments or contacts. Simply connect your handheld device to your desktop computer to start synchronization. For more detailed info, please visit [MoneySync web page](#).

Information Type	Status
Calendar	Synchronized
Contacts	Synchronized
Tasks	Synchronized
Cash Organizer	Synchronized
Favorites	Synchronized

### 12.4.2 Data export

You can export your financial data created in Cash Organizer to other applications (Quicken, MS Money, MS Excel, and MS Word) for further processing. To export the data, switch to the **Account Center** mode, highlight an account you are going to export and select the **Actions/Export** menu item. You can export data related either to the current account or to all accounts.

- In the fields **From** and **To** set the period for which data should be exported.
- Select export data format in the **Format** field in accordance with which program you're going to use for further data processing:



Format	Program
Quicken (*.qif)	Quicken, MS Money, etc.
Pocket Excel (*.pxl)	MS Excel, Pocket Excel, etc
Windows Text (*.txt)	MS Word, Pocket Word, etc
Unicode Text (*.txt)	MS Word, Pocket Word, etc. (in case symbols of local alphabets, not set in Windows, are used)

- Select the format of the date presentation in the **Format Date** field;
- In the **Decimal** field, select "." or "," as a decimal symbol;
- Mark the **MS Money/Quicken 98 Date Format** checkbox if you're going to export the data into the versions of MS Money, Quicken, etc., released in 1998 or earlier;
- Mark **Export All Accounts** checkbox if you want to export all of your accounts (if the field is not marked; only the current account will be exported).
- In the **File Name** field, select the folder where the exported file(s) will be created. Enter the address manually or select the folder using the **Browse** button.

After you have adjusted all the parameters for the data exporting, press **OK**.

### 12.4.3 Data import

Cash Organizer allows you to import financial data from \*.qif files (supported by the most financial managers like MS Money, Quicken, etc.). Switch to an account you are going to import data to and select the **Actions/Import QIF** menu item. You will see a list of all \*.qif files. To start importing, tap on required file.